



MONTHLY MEMBERSHIP PROGRESS REPORT

District A 1

Results as of: 9/30/2015

GMT: CHRIS LEWIS

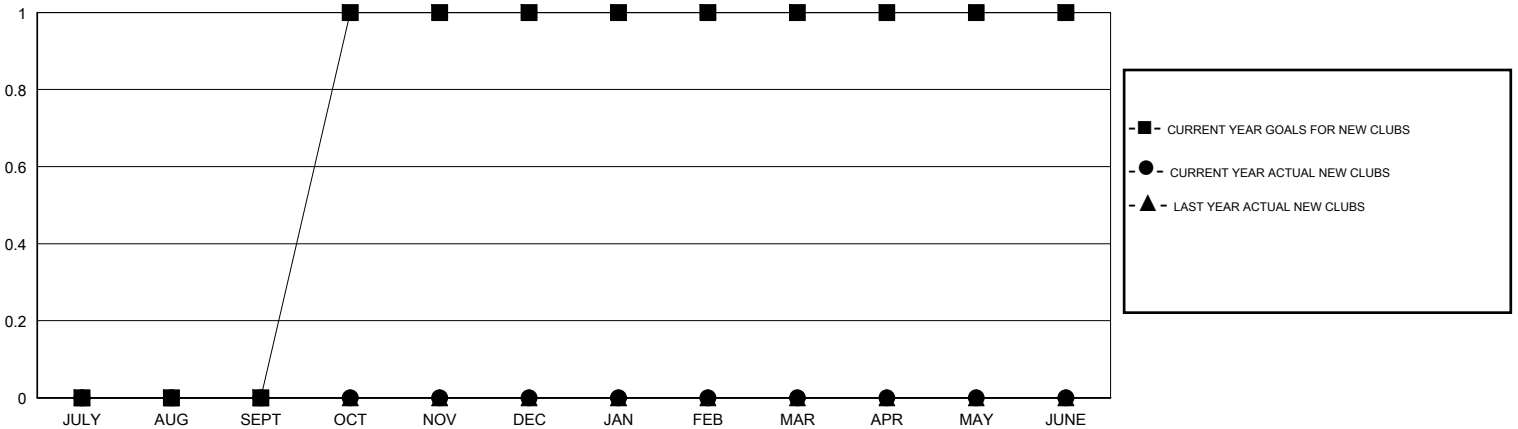
LOCATION ONTARIO

GMT CA 2

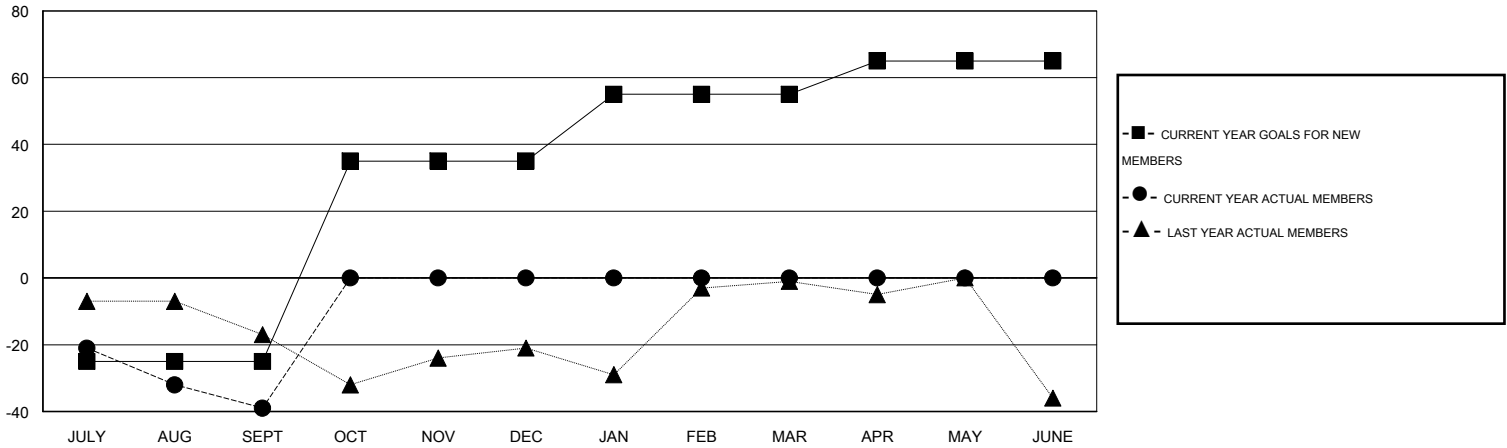
Clubs				
RESULTS FOR 2015-2016				
QUARTER	NEW CLUB GOAL	NEW CLUBS	DROPPED CLUBS	NET GAIN/LOSS
JULY/AUG/SEPT	0	0	0	0
OCT/NOV/DEC	1	0	0	0
JAN/FEB/MAR	0	0	0	0
APR/MAY/JUNE	0	0	0	0

Members				
RESULTS FOR 2015-2016				
QUARTER	NEW MEMBER GOAL	CHARTER AND NEW MEMBERS ADDED	DROPPED MEMBERS	NET GAIN/LOSS
JULY/AUG/SEPT	-25	11	50	-39
OCT/NOV/DEC	60	0	0	0
JAN/FEB/MAR	20	0	0	0
APR/MAY/JUNE	10	0	0	0

GOALS AND ACTUAL NEW CLUBS CUMULATIVE



GOALS AND ACTUAL MEMBERS CUMULATIVE



DROPPED CLUBS: 0	6 CLUBS OF 44 ADDED 1 OR MORE NEW MEMBERS	<u>GENDER DISTRIBUTION</u>	
<u>DROPPED MEMBERS</u>		MALE	999 (81.55%)
DECEASED	10	FEMALE	226 (18.45%)
CLUB CANCELLED	0	<u>FAMILY UNIT MEMBERS</u> 185	
OTHER	40	<u>HEAD OF HOUSEHOLD</u> 91	
TOTAL	50	<u>NON-HEAD OF HOUSEHOLD</u> 94	

[CLICK HERE FOR HEALTH ASSESSMENT DATA](#)